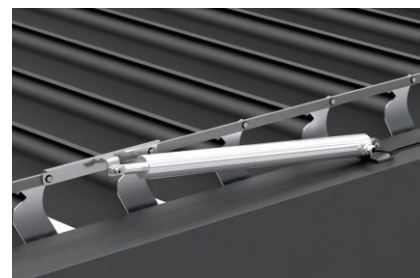
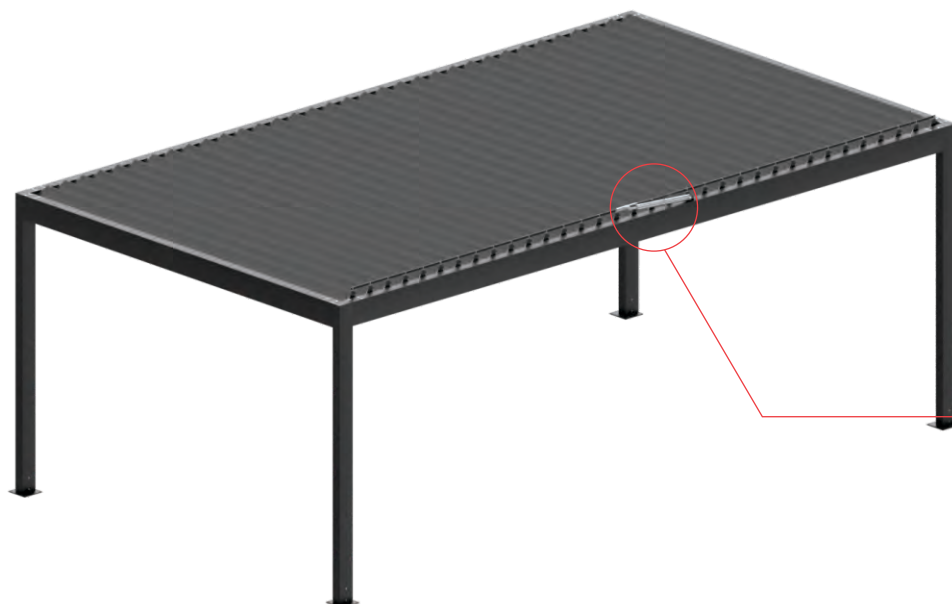


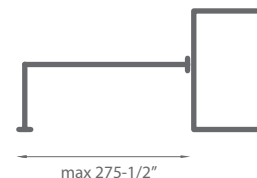


PERGOLA SUNBREAKER 400



Electric motor with switch

Color	RAL
Electric drive	yes
Maximum projection	275-1/2"
Maximum width	157-1/2"
Water drainage system	yes



Standard construction colors:

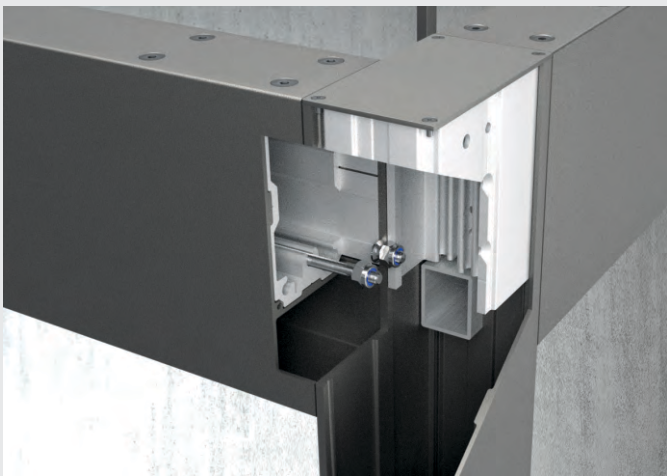
○ RAL 9016 mat ● FSM 71319



LED lighting available

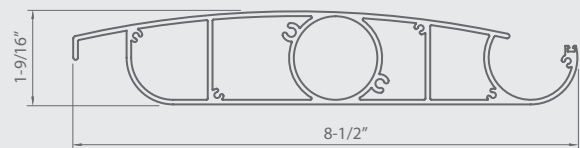
Properties:

- Extruded aluminium construction with stainless steel elements
- Water drainage system integrated with the construction
- Sun and waterproof system
- Possibility of using weather automation
- Construction and roofing painted in any RAL color (optional)
- Roofing made from rotating slats
- Maximum dimensions of single module: 13' width and 23' projection
- Minimum dimensions of single module: 47" width and 47" projection
- Free-standing and wall-mounted version
- Construction in accordance with PN-EN 1090 and PN-EN 13659
- Additional chamber in the beam allows to use an invisible overflow system between the gutters (option with 4 gutters)
- Optional LED lighting application
- Possibility of using a side panel system „SLIDE” & “120 Ziip”

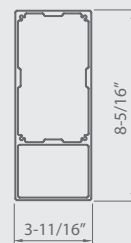


Two-chamber beam

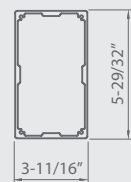
Blade cross-section



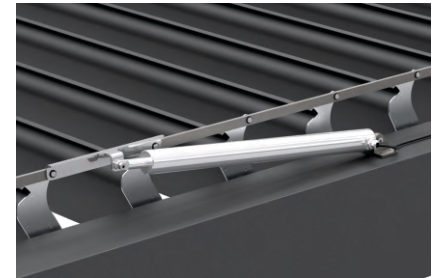
Beam cross-section



Post cross-section



PERGOLA SUNBREAKER 500

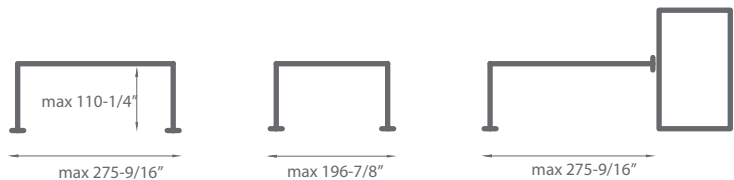


Electric motor with switch

Color	RAL
Electric drive	yes
Maximum projection	275-1/2"
Maximum width	196-7/8"
Water drainage system	yes

Standard construction colors:

○ RAL 9016 mat ● FSM 71319



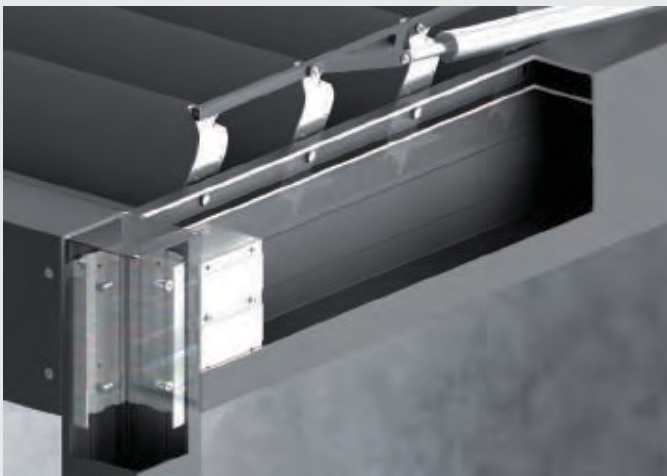
Non-standard colors include the entire RAL palette available for additional cost



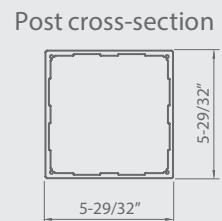
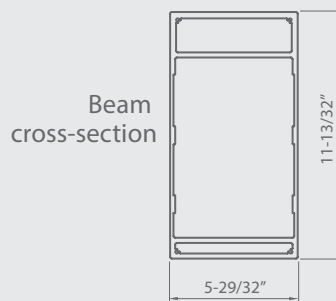
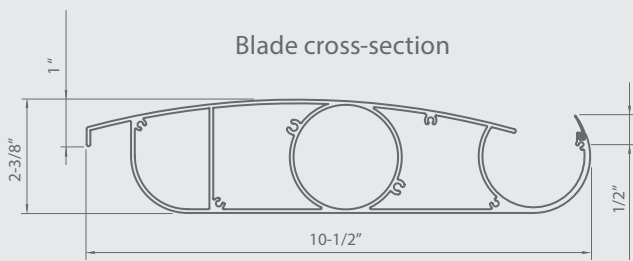
RAL is a color matching system used in Europe, mainly used for varnish and powder coating

Properties:

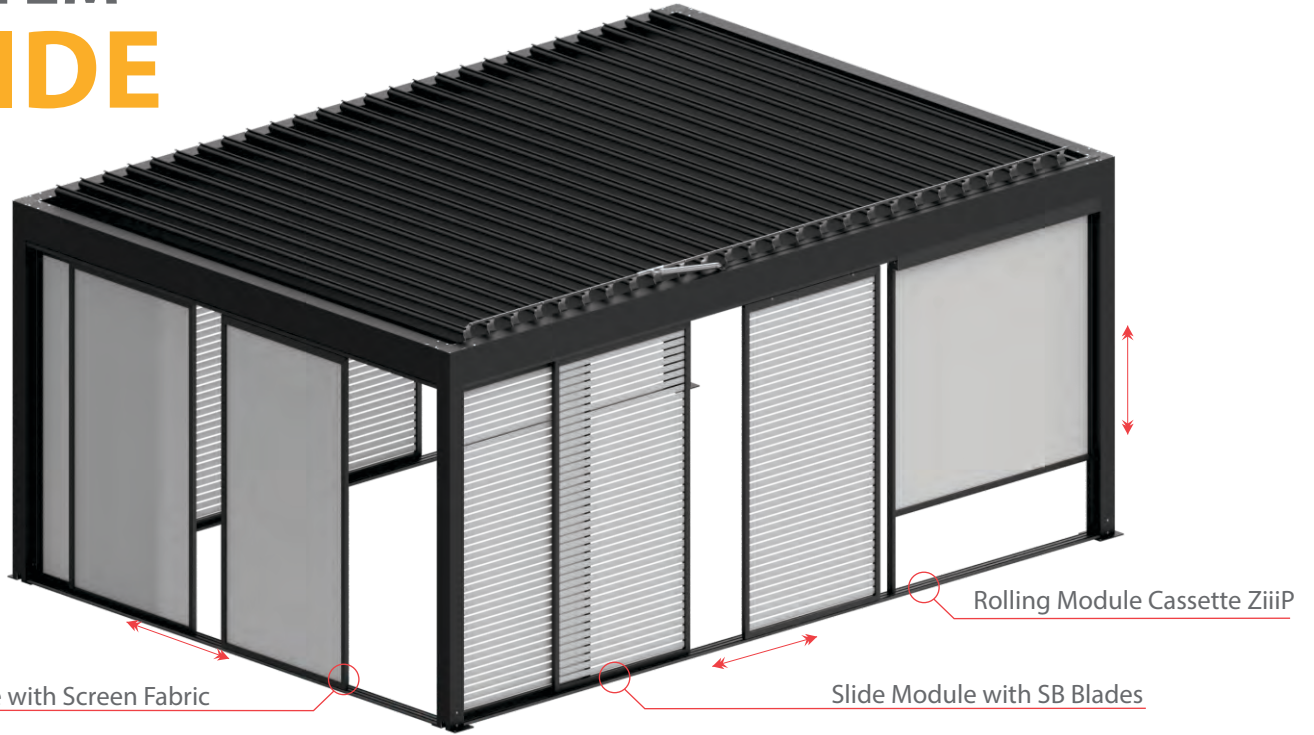
- Extruded aluminium construction with stainless steel elements
- Water drainage system integrated with the construction
- Sun and waterproof system
- Construction and roofing painted in any RAL color (optional)
- Roofing made from rotating slats
- Maximum dimensions of single module: 16' width and 23' projection
- Minimum dimensions of single module: 59" width and 59" projection
- Possibility of modular connection
- Possibility of wall-mounted and free-standing version
- Possibility of using a side panel system „SLIDE“ & “120 ZiiiP”
- Construction in accordance with EN 1090 and EN 13659
- Optional LED lighting application
- Possibility of using weather automation



Beam/post cross-section



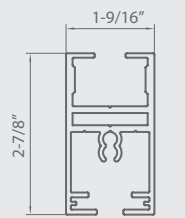
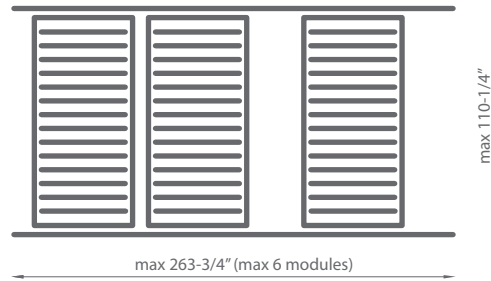
SYSTEM SLIDE



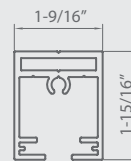
Color	RAL
Max width of single module	54-5/16"
Max height of single module	110-1/4"
External use	yes
Cover	fixed blades
	Serge 1% (100) fabric
	Serge 600 fabric

Standard construction colors:

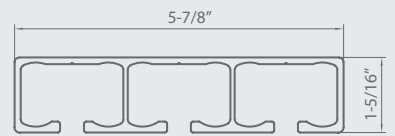
- RAL 9016 mat
- FSM 71319



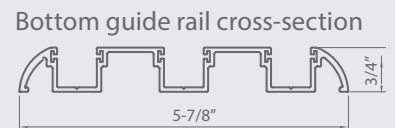
Upper frame cross-section



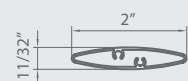
Bottom and side frame cross-section



Upper guide rail cross-section



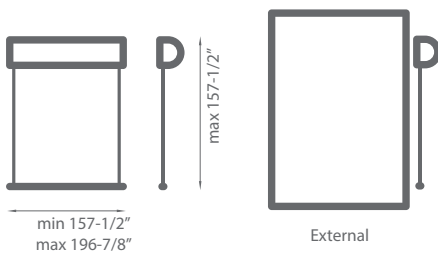
Bottom guide rail cross-section



Blade cross-section

REFLEKSOL 120 ZIIIIP

Color	RAL
Electric drive	yes
Manual drive	no
Maximum width	196-7/8"
Maximum height	157-1/2"
External use	yes
Internal use	no
Cover	Serge 1% (100) fabric Serge 600 fabric

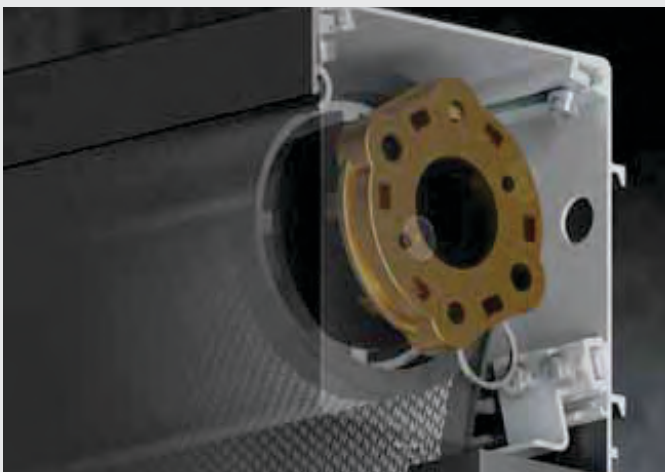
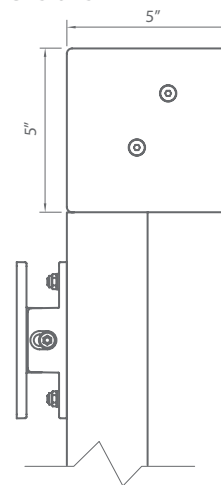


Standard construction colors:

- RAL 9006 mat ● RAL 9007 mat
- RAL 7016 mat ● FSM 71319
- RAL 9010 mat



Cassette dimensions



Properties:

- Wind resistance class 6
- Extruded aluminium cassette dedicated for niche and facade installation
- Cassette for under plaster installation made from aluminium sheet, equipped with an extension enabling external plaster application
- ZiiiP mechanism
- Revision from the front of the cassette (under plaster version with revision from the bottom of the cassette)
- Two-piece guide rail with compensating gaskets
- Electric drive
- Self-supporting system
- Construction available in any color from RAL palette (optional)
- Modular brackets available
- System is compatible with Pergola

SLAR-SHIELD

exterior shading solutions

Phone: +44 03302 020 701
Email: info@solar-shield.co.uk

solar-shield.co.uk